

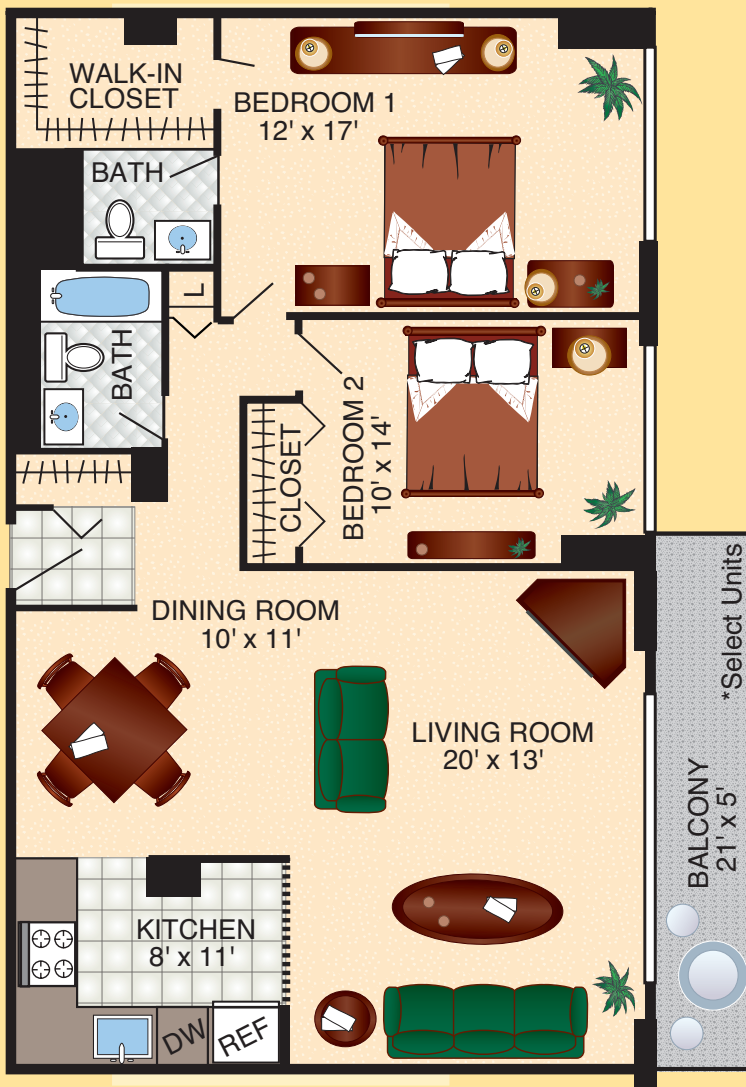
Discover the Delights of Bethesda Living

Two Bedroom, Two Bathroom

1195 sq. ft.

Ideal Location. Timeless Elegance. Contemporary Amenities:

- All utilities included in rent
- Generously proportioned executive studios, one, two or three bedroom apartments with up to three baths
- Modern, updated interiors
- Wall-to-wall carpeting
- Upgraded kitchens and cabinetry with modern appliances
- Spacious walk-in closets
- Individual room controlled thermostats
- Exquisitely detailed and designed courtyard
- Rooftop pool and sundeck
- Social/Party room with wet bar and kitchenette
- Fully equipped, club-style fitness room
- High-speed internet access with free Wi-Fi in lobby
- Parking garage
- 2 blocks to the Metro
- 24-hour lobby and emergency maintenance service
- Valet services and package acceptance
- Courteous and professional management team



Topaz House has a wide variety of floor plans to choose from.
Those shown are representative of what is available.
All dimensions are approximate and not to scale.



4400 East-West Highway
Bethesda, MD 20814

301-657-2222
800-307-2161

www.topazhouse.com

